



Seamless Spaces

Material continuity in contemporary architecture



THE ERA OF CONTINUITY

Contemporary architecture is moving towards a conscious simplification of space. In contrast to the visual saturation of previous decades, a clear need emerges: to create cleaner, more fluid and coherent environments, where every element forms part of a unified whole.

In this context, design is no longer understood as a sum of independent pieces, but as a continuous experience. Boundaries become blurred, transitions are softened and materials take on a leading role in the construction of space.

In this context, design is no longer understood as a sum of independent pieces, but as a continuous experience. Boundaries become blurred, transitions are softened and materials take on a leading role in the construction of space.

Thus, continuity is consolidated as one of the key principles in contemporary architecture and interior design, paving the way towards environments where form, material and function are naturally integrated.

SEAMLESS DESIGN

Seamless design is defined as a design approach based on the visual and material continuity of spaces. Its objective is to eliminate unnecessary interruptions in order to create clean, homogeneous and coherent surfaces.

Beyond the absence of visible joints, the concept is based on total integration between architecture, furniture and materiality. Floors, walls and functional elements are conceived as parts of the same system, generating a unified reading of the space.

This approach is built upon three fundamental principles: material continuity, which reduces visual fragmentation; the elimination of cuts and abrupt transitions; and the integration of different architectural elements into a single formal language.

The result is spaces that convey spaciousness, even in reduced surfaces, and that stand out for their timeless elegance. Formal simplicity does not imply an absence of character, but rather greater clarity in the expression of design.

In this sense, seamless design is not merely an aesthetic trend, but a design tool that allows the creation of more balanced, functional and sensorially coherent environments.





DESIGN KEYS

Seamless design is not merely an aesthetic intention, but the result of a series of precise design decisions. Visual continuity is built through the control of material, scale and detail, where every element is integrated into a coherent whole.

USE OF LARGE FORMAT

The reduction of joints is one of the fundamental principles of continuous design. The use of large-format pieces makes it possible to minimise visual interruptions and reinforce the unified reading of surfaces. In this way, the material is perceived as a continuous skin that envelops the space, providing cleanliness and visual spaciousness.

CONTINUITY BETWEEN SURFACES

Floors, walls and functional elements are no longer understood as independent parts, but as a continuous system. The application of the same material across different surfaces — horizontal and vertical — eliminates the traditional boundaries of space, generating smooth transitions and greater formal coherence.

INTEGRATION OF TECHNICAL ELEMENTS

Colour control is essential to avoid visual fragmentation. Neutral tones, continuous palettes and subtle variations allow the creation of balanced spaces, where the focus lies on materiality and light rather than contrast.

INTEGRACIÓN DE ELEMENTOS TÉCNICOS

Seamless design requires careful attention to detail resolution. Elements such as taps, sockets or storage systems are discreetly integrated into the architecture, avoiding visual interference and reinforcing the purity of the whole.

ASCALE SEAMLESS DESIGN

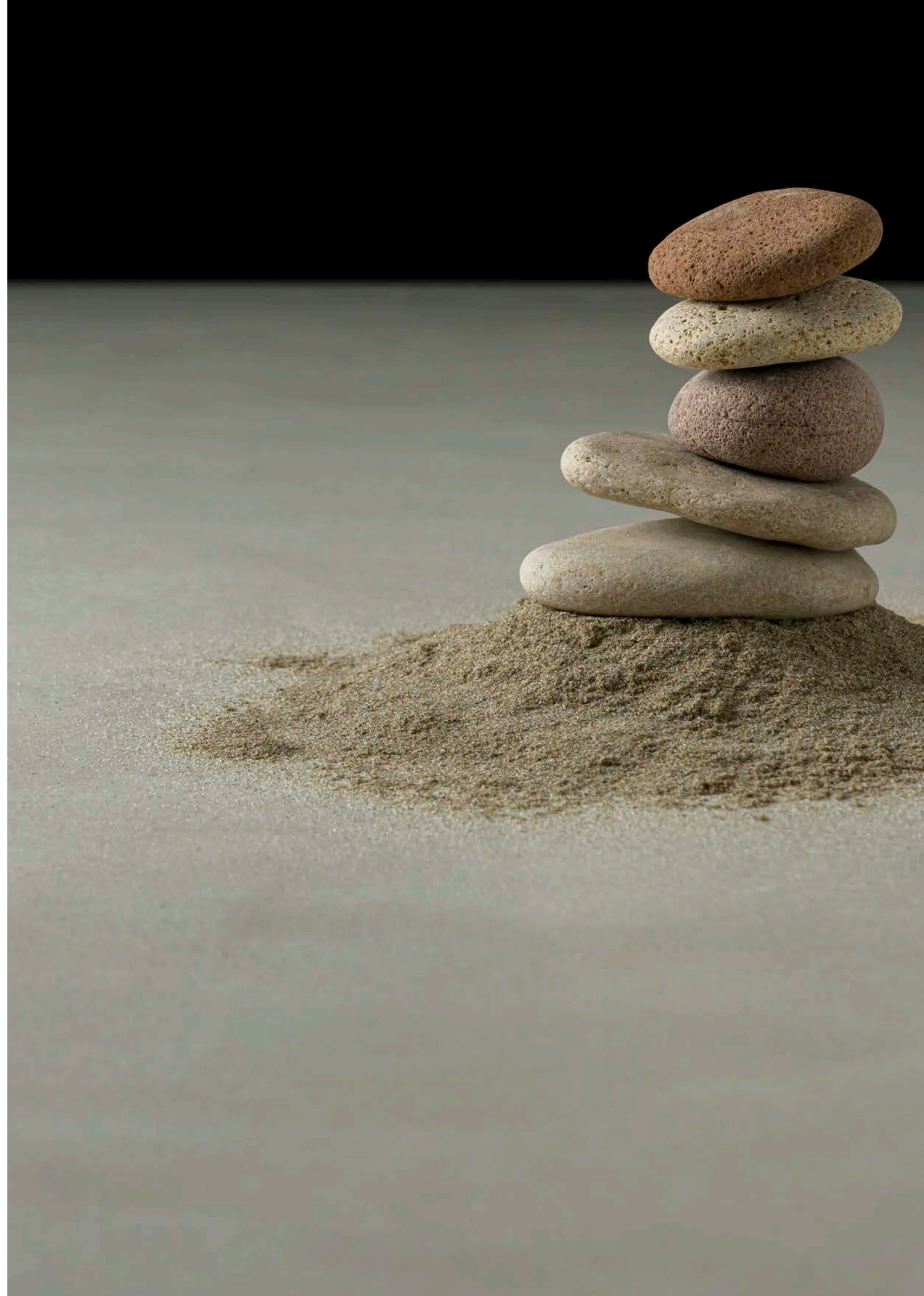
Within the context of seamless design, ASCALE positions itself as a material tool that allows architectural continuity to be taken to its highest expression. Its large-format surfaces, combined with a wide variety of finishes and textures, make it possible to create spaces where visual perception is uninterrupted and the material becomes a continuous design element.

The ability to work with large-scale pieces reduces the presence of joints to a minimum, favouring a unified reading of surfaces. This makes it possible to extend the same material across different planes (floors, walls, countertops or vertical elements), reinforcing the idea of an enveloping and coherent space.

The aesthetic versatility of ASCALE facilitates adaptation to different architectural languages within the concept of continuity itself. From stone-inspired surfaces with soft veining to more homogeneous and technical finishes, the material integrates into both residential projects and contract or commercial spaces, always maintaining constant visual coherence.

At a functional level, its technical performance allows this continuity to be not only formal, but also practical. The resistance, ease of maintenance and hygiene of the material make its application on continuous surfaces viable without compromising the everyday use of the space.

In this way, ASCALE not only follows the seamless design trend, but materialises it, offering solutions that transform the idea of continuity into a tangible architectural reality.





AMAYA LINEN

01.

MONOMATERIALITY

Monomateriality represents the highest expression of continuity in architecture and interior design. Through the use of a single material applied extensively, space is conceived as a unified volume, where the traditional boundaries between surfaces disappear.

Floors, walls and functional elements are integrated into the same material skin, eliminating visual fragmentation and reinforcing a clear and coherent reading of the whole. This reduction of elements does not imply a loss of richness, but rather greater precision in design, where every decision acquires greater relevance.

The result is serene and timeless spaces in which materiality becomes the main expressive resource. Continuity not only visually enlarges the space, but also generates a sense of order and balance that defines the user experience.

In this context, the **material ceases to be a finish and becomes architecture**, capable of creating continuous surfaces that naturally envelop and structure the space.

Monomateriality does not seek to simplify space, but to unify it through a single material idea.

SEAMLESS TOTAL KITCHEN

Kitchens are evolving towards environments where the material ceases to be a cladding and becomes a spatial structure. A single finish extends uninterrupted across floors, countertops, walls, ceilings, columns and even integrated shelving, blurring the boundaries between architecture and furniture.

The result is an immersive experience where the space is perceived as a unique, continuous and monolithic volume.

The elimination of material changes reinforces the idea of total continuity. The kitchen is conceived as a homogeneous architectural block where every surface participates in the same material language, eliminating any visual hierarchy between constructive and functional elements.



COSMOPOLITA GRAY

02.

SILENT ARCHITECTURE

Silent architecture proposes an approach to design based on the reduction of visual noise and the pursuit of maximum spatial clarity. Through the elimination of superfluous elements, space is defined by what is essential: proportion, light and material.

Within this approach, architecture does not seek to stand out, but to integrate naturally into the user experience. Continuous surfaces, precise junctions and material coherence make it possible to create environments where everything is present, yet nothing feels excessive.

Continuity plays a key role in this trend. By minimising unnecessary interruptions and transitions, the space is perceived in a more ordered and legible way, encouraging a sense of calm and balance. Every element responds to a clear logic, where simplicity does not imply absence, but control.

The result is timeless and silent spaces, where architecture is expressed without stridency and material gains prominence through its purity.



A single space, multiple ways of inhabiting it.

MONTBLANC



SEAMLESS BATHROOMS WITH MATERIAL ACCENT

This type of bathroom explores Seamless Design from a more realistic and architectural perspective, where material continuity does not seek absolute uniformity, but rather the creation of a coherent space with nuances of contrast.

The use of the same material across the main surfaces reinforces the sense of spatial fluidity, while the incorporation of a differentiated veined piece provides identity and visual balance, avoiding monotony without breaking the unity of the space.

The bathroom is perceived as a continuous block in which the architecture remains homogeneous, while certain functional elements gain prominence through material contrast, generating a dialogue between continuity and expression.

NEBULA BROWN

SEAMLESS TOTAL BATHROOM

In contemporary bathrooms, the material ceases to be a mere surface cladding and becomes the architectural container of the space itself. A single finish covers the surfaces, eliminating any visual or technical transition.

The result is a completely continuous environment where the boundaries between surfaces disappear and the bathroom is perceived as a monolithic volume, sculpted from a single material.

The integration of all elements — bathtub, washbasin, floor, walls and ceiling — under the same material transforms the bathroom into a unique architectural piece. Rather than a space fragmented by functions, it is perceived as a continuous block carved into the material.

Material uniformity intensifies the sensorial experience of the space. Light is reflected homogeneously, and the bathroom acquires an almost sculptural condition, where the user inhabits a continuous surface.



AMAYA LINEN



03.

WARM MINIMALISM

Warm minimalism emerges as an evolution of traditional minimalism, incorporating a more sensorial and welcoming dimension without renouncing formal clarity. In contrast to the coldness of excessively purified spaces, this trend introduces warmth through material, light and tonality.

The reduction of elements remains fundamental, but it is balanced through a careful selection of naturally inspired materials and a soft colour palette. Warm tones, subtle textures and continuous surfaces make it possible to create spaces where simplicity does not feel distant, but close and comfortable.

Within this approach, **material continuity** plays an essential role. Far from creating neutral or impersonal environments, continuous surfaces become the support for a balanced atmosphere, where every element is integrated without generating visual noise.

The result is serene, luminous and liveable spaces, where design does not seek to impose itself, but to accompany. Architecture is simplified, but not emptied: it is enriched through light, proportion and the quality of the material.

Warm minimalism does not eliminate elements, but rather selects only those that bring balance, warmth and meaning to the space.



04.

OPEN PLAN LIVING

Open plan living redefines the way domestic spaces are organised, eliminating traditional divisions to create fluid and connected environments. Kitchen, dining and living areas are integrated into a single continuous surface, where functionality is articulated without the need for physical barriers.

In this type of layout, material continuity takes on a fundamental role. The use of homogeneous surfaces reinforces the connection between different areas, facilitating a unified reading of the space and enhancing the feeling of spaciousness.

The transition between uses occurs naturally, supported by the arrangement of furniture, lighting or slight variations in materiality, without breaking the coherence of the whole. The result is more dynamic and adaptable spaces aligned with new lifestyles, where interaction and flexibility take centre stage.

Far from being a simple layout solution, open plan living becomes a design tool that promotes both visual and functional continuity, generating more open, luminous and connected environments.

CRYSTAL LUX WHITE IN PERFECT HARMONY BETWEEN *KITCHEN AND LIVING ROOM*



A clear example of Seamless Design in its purest form: **the complete dissolution between kitchen and living space.**

A **single space**, multiple ways of inhabiting it.

TOTAL FUSION BETWEEN KITCHEN AND LIVING SPACE

This project represents the most advanced expression of Seamless Design within the ASCALE portfolio. The kitchen and living room are conceived as a single continuous space, without visual hierarchies or material disruptions.

The use of **Crystal Lux White** is key to this integration: its neutral tone and homogeneous surface allow the same material language to extend across horizontal and vertical planes, eliminating any perceptible boundary between functions.

Continuity is reinforced through light, which unifies the whole and amplifies the sense of spaciousness. The result is a space where architecture is perceived as a unique, fluid and coherent volume.



TAJ MAHAL IN A MEDITERRANEAN KITCHEN

Material continuity is interpreted from a warm and residential perspective, where the language of seamless design is combined with a Mediterranean and natural aesthetic. The use of **Taj Mahal** on countertops, islands and vertical cladding allows the construction of a unified visual reading, reinforcing the connection between the different surfaces within the space.

The integration between kitchen and architecture generates a sense of fluidity that encourages a natural transition between functional areas, while the soft colour palette and warm materials bring balance and comfort to the whole.

Far from a strictly minimalist vision, this project demonstrates how continuity can coexist with more welcoming and liveable spaces, maintaining visual coherence without renouncing the warmth of the domestic environment.

WARM AND BALANCED CONTINUITY



Material **continuity** and chromatic **homogeneity** generate a connected, fluid and visually balanced space.



THE ESSENCE OF CASA EUGENIA – ONICE LUX WHITE

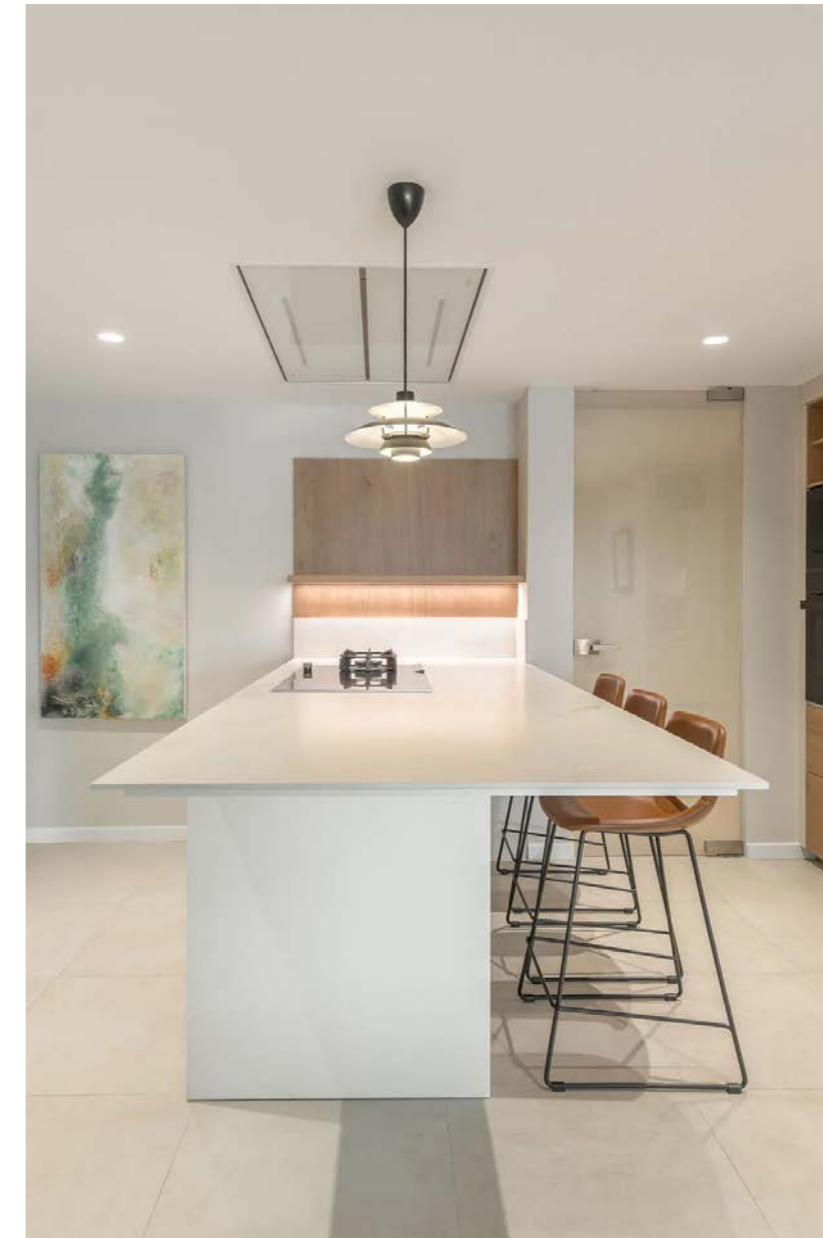
Casa Eugenia proposes a more sensorial interpretation of Seamless Design, where continuity does not depend solely on spatial integration, but on the atmosphere generated by the material.

The use of **Onice Lux White** provides a luminous, soft and enveloping surface that transforms the kitchen into a serene and continuous space. Light passes through the material and reinforces the perception of fluidity, generating a sense of spaciousness and architectural calm.

Although the kitchen maintains its clearly defined function, it integrates into a broader spatial language, where the material acts as a unifying element between architecture and perception.



ATMOSPHERIC SEAMLESSNESS AND LUMINOUS CONTINUITY



A Seamless Design understood as **luminous and material continuity**, more emotional than structural.

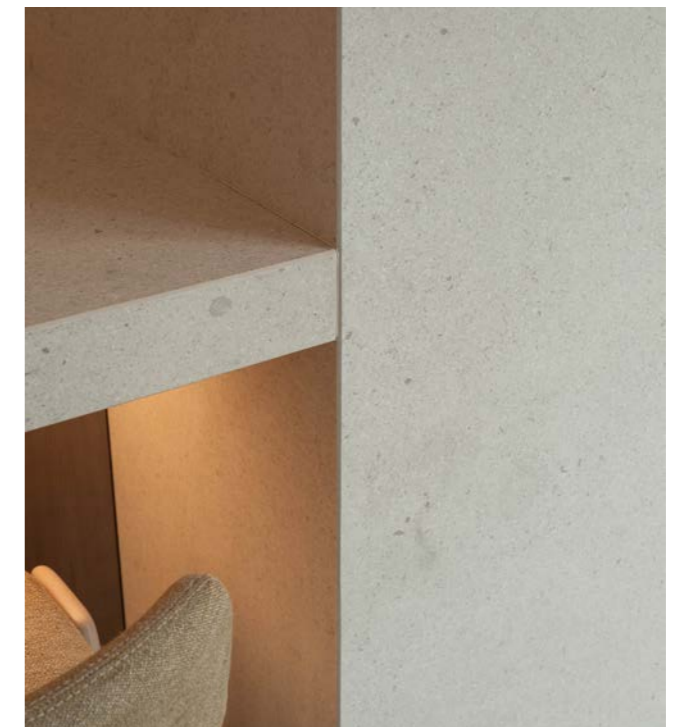
MARTECH OFFICE IN MARBELLA

In this project, material continuity is used as a tool to create an organised, clean and visually balanced working environment. The large surfaces and chromatic coherence of **Palomastone** make it possible to unify the different spaces, generating a clear and functional architecture.

The integration of mineral-inspired materials brings uniformity to the whole, reducing visual noise and promoting a more fluid perception of the space. Continuity is not approached from a monomaterial perspective, but rather as a resource to connect architecture, circulation and user experience.

The result is a contemporary and serene environment, where formal simplicity and precision in detail reinforce a sense of balance and spatial clarity.

FUNCTIONAL CONTINUITY AND SPATIAL CLARITY



The **balanced integration** of materials reinforces **spatial clarity** and promotes a cleaner, more serene and functional working experience.

THE HEART OF THE HOME: PATAGONIA GOLD

Spatial continuity and material integration transform the kitchen into the central core of the home. Through an open layout and a unified visual reading, the space encourages a fluid transition between the different areas of use, reinforcing the connection between architecture and everyday life.

The material takes on a leading role within the composition, extending across the main surfaces to generate coherence and visual balance. Despite the graphic strength of **Patagonia Gold**, its continuous application allows the overall perception to remain ordered and connected.

The project interprets seamless design from a warmer and more experiential perspective, where continuity not only organises the space, but also enhances coexistence and interaction.

SPACE AS A POINT OF CONNECTION



The **integration** between material, architecture and open layout creates a **fluid, connected space** designed for sharing.



HEADQUARTERS
CTRA. CASTELLÓN, 117
ALCORA 12110 (CASTELLÓN)

LOADING ADDRESS
CENTRO LOGÍSTICO 11. GRUPO PAMESA
CTRA. CASTELLÓN - ALCORA
PZA. POLÍGONO 4, 4 PG.12
SAN JOAN DE MORÓ 12130
(CASTELLÓN)

+34 964777700 | info@ascale.es

ASTALE
Nature inspiring innovation